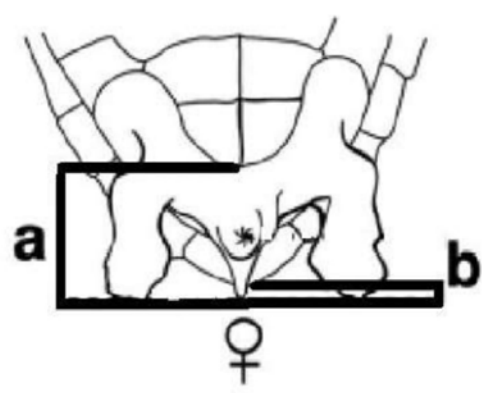
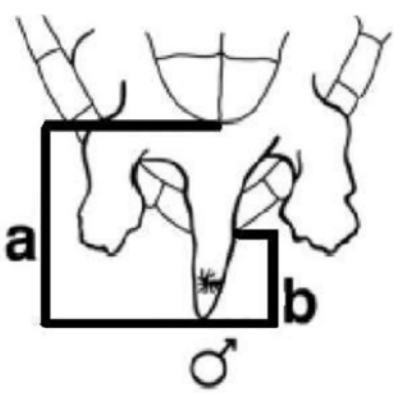


# MALE OR FEMALE



## HOW TO DISTINGUISH:



(a) refers to the total tail length

(b) is the proportion of the tail that usually extends beyond the carapace.

**Sex can be identified only in adult or sub-adult individuals (carapace length of more than 70cm).**

**The best way to identify the sex of a turtle is by observing its tail.**

**If the tail extends well beyond the carapace (>20cm), it is an adult male.**

**The tail of a female turtle is short and usually extends only slightly beyond the end of the carapace (< 10cm).**

Illustrations: Research and Management Techniques for the Conservation of Sea Turtles, IUCN-SSC



**TURTLEWATCH**<sup>2.0</sup>  
EGYPT