

LEATHERBACK TURTLE

Dermochelys coriacea

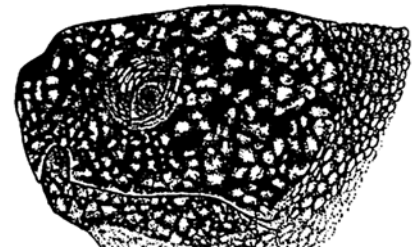


HOW TO IDENTIFY:

- **HEAD**

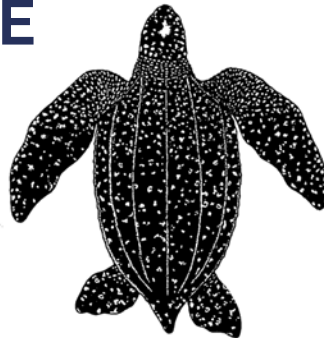


NO SCALES, THEY
HAVE A **PINK SPOT**

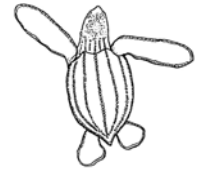


- **CARAPACE**

7 LONGITUDINAL
RIDGES,
FLEXIBLE CARAPACE,
NO SCUTES



CARAPACE LENGTH:
ADULTS > 100cm
JUVENILES < 70cm



Illustrations: Research and Management Techniques for the Conservation of Sea Turtles, IUCN-SSC; Sea Turtle Curriculum, UF/IFAS

SIZE: up to 260cm
COLOUR: black with white spots
DIET: mainly jellyfish. Also: seaweed, fish,
crustaceans, other marine invertebrates

Remember to report your sightings!



 www.facebook.com/turtlewatchegypt

 turtlewatchegypt@gmail.com



TURTLEWATCH^{2.0}
EGYPT